



# CCSA Meeting

November 30, 2009



# The Board is Committed to:

Christian Education that is:

- High Quality
- Sustainable
- Affordable



- Through Prayer and Faith, CCSA board has wrestled and debated with the issues at the Elementary School.
- Because the Board cares and wants to further The Kingdom we recommend:
  - Proceeding with a transition of as many elementary school students, and as many teachers as possible to Grandville Christian School with support of Calvin Christian School Association. We will proceed with the closing of the Calvin Christian School Elementary building in June 2010.

# What is the Plan?



- Partner with Grandville Christian School to transition elementary education to GCS.
- Provide busing to all CCES areas.
- Ensure that adequate assistance is available to all families.
- Continue programs unique to CCES such as before and after school programs.
- Smooth the transition by creating joint committees to advise on the process.

# Benefits



- Affordable Tuition
- Excellent Teachers
- Strong Academics and Services
- Viable Middle and High School
- Combines the Best of CCES and GCS

# Christian Education Sustainability



- The Middle School and High School are sustainable.
- We are above the break even point in the Middle School and High School.
- Grandville Christian has stabilized enrollment for the last 7 years.
- Transferring kids to GCS, is our best opportunity to sustain K-12 Christian Education in Wyoming & Grandville.
- Combining the populations of CCES and GCS will bring the best of both together to help maintain the MS and HS.



# Hard Facts

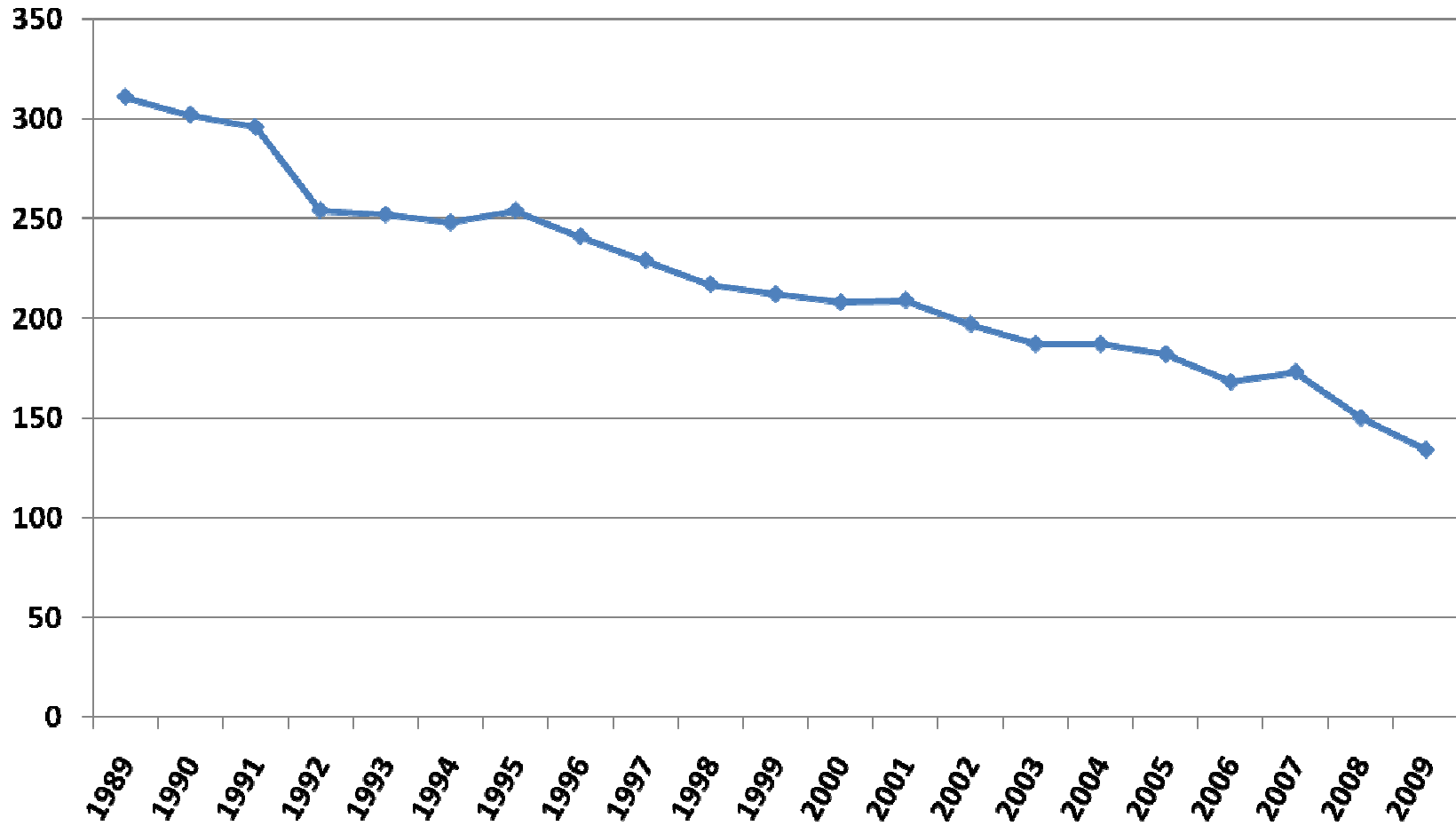
- Elementary enrollment is down 58% over one generation (317 to 134 in last 20 years).
- Enrollment dropped 21% in the last two years.
- Board believes decline is likely to accelerate as small size becomes apparent to prospective parents and further due to current economic crisis.
- Families can no longer afford our tuition.

# Financial Realities



- We are below the break-even point
- We can no longer cut costs without combining grades
- Every student drop in enrollment adds ~\$5,500 to the loss
- One-seventh of association revenue, but tuition assistance has grown to one-third of available funds to maintain enrollment

# Elementary Enrollment



# Christian Education in West Michigan



- Christian Education has changed in all of West Michigan.

Private & Public Schools are consolidating.

- Grand Rapids Christian (consolidated from 5 into 1 elementary)
- Legacy Christian (Kelloggsville & Cutlerville)

Other schools in the area have already consolidated, and we believe that this is the opportune time for CCSA to do the same.

# Top Expenses



Annual Expense \$878,000

Wages & Compensation 77%

Transportation 9%

Utilities 4%

Supplies 3%



# Tuition Rates

## 2009-2010 Actual

- CCES Costs = \$878,000 at 134 students
- Tuition rate = \$5,270

## 2010-2011 Projected

- CCES Costs = \$878,000 at 118 students
- Tuition rate = \$7,900



# Timeline of Board Process

- Since March of 2000, the CCSA Board of Trustees has been working to address the problem of decreased enrollment and rising tuition.
- 7 different committees were formed and studied ways to keep the Elementary School sustainable.
- In March 2005 a planning committee sets an enrollment # of 170 students as a trigger point for 'radical action'.
- Fall 2006 – Enrollment at 168.
- 2005-2009 – Several alternative models were explored.
- April 2009 – Plan for Success to raise money & enrollment.



# Models Explored

Elementary School Task Forces have considered many possible solutions over the last 10+ years. (principal & parents)

- Magnet School
- Low Cost Model
- Home School Hybrid
- School within a School
- Big Box Profit Center Model
- Managed Enrollment

None of these models met our goals for educating our children.

# Plan for Transition



- CCSA Board has been talking with Grandville Christian.
- Grandville Christian's Board and Administration are fully committed to accepting all of our kids.



# GCS Promise

- **Teachers** – GCS has committed to looking first to CCES teachers for any additional staffing needs.
- **Transportation** – Similar busing routes will still be available.
- **Tuition Assistance** – GCS has tuition assistance.
- **Before/After School Care** – Will continue at GCS.
- **Joint Transition Committees.**

# Long Term Plan



- Consolidation of CCES to GCS will keep a larger number of Students to the MS & HS
- We need Parent & Church commitment to Christian Education
- Maintain Affordability of Christian Education
- Continued Prayer